

INSTRUCTION MANUAL APN AND BASIC NETWORK CONFIGURATION KOAMTAC KDC470Ci

Before You Start – General Comments.

The KOAMTAC devices require a two-step configuration process.

1. The KOAMTAC device itself must be configured for use, and
2. the accompanying mobile device (e.g. smartphone) it will be paired with must be equipped with the correct APN to be able to connect it and the KOAMTAC to a CBRS network.

The two steps can be followed in either order.

The KOAMTAC KDC470Ci configuration is included in this document starting on the next page (2).

In addition, here is a link to the KOAMTAC documentation on their website.

<https://koamtacon.com/product/documentation/>

And for the Respective Configuration Guide for the Accompanying Mobile Device, see links below:

CBRS Enabled Smartphones

- **Samsung Galaxy Note 10**
 - [Samsung Galaxy Note 10 APN Instruction Manual Specifications](#)
- **Apple iPhone 11**
 - [Apple iPhone 11 APN Instruction Manual Specifications](#)

Page Break

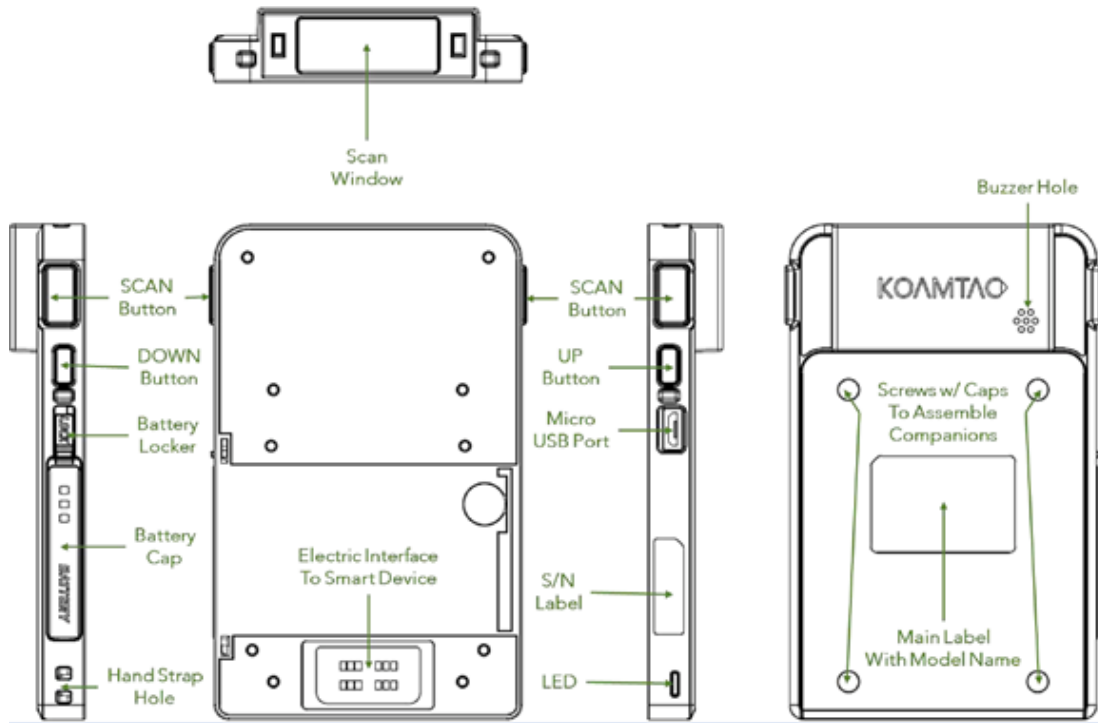
BASIC CONFIGURATION GUIDE

KOAMTAC KDC470Ci with Android and iOS devices



STEP 1: Power off

Power off the phone and insert it in the case. This case contains the barcode scanner unit shown below:



Turning the KDC470 On or Off

- To turn on, press any SCAN button and DOWN button together for 3 seconds at the same time until you hear a short beep sound. KDC470 will sound a long beep when it is ready to use. (You should hear the long beep in about 30 seconds.)
- To turn off, press any SCAN button and DOWN button together for 3 seconds at the same time. You can make sure that it is turned off by pressing any SCAN button to read a barcode after that. If you do not see the scanning beam, the device is off.
- Check the figure above to locate the SCAN and DOWN buttons.

STEP 2: Connecting KDC470 to your device with Bluetooth

To read barcode data with your KDC wirelessly, pair the KDC and smart device via Bluetooth. If you previously paired the devices and no changes have been made in the smart device's Bluetooth settings, the smart device will always recognize the KDC that has previously been paired. However, if changes have been made, you may need to repeat the pairing process.

First, scan the Bluetooth Mode barcode.



Two Bluetooth Profiles

There are two different methods to pair KDC470 to a host device.

- a. HID (Human Interface Device): one-way communication with the host device. The KDC wedges data to the Android keyboard. (HID Keyboard)
- b. SPP (Serial Port Profile) or MFi (Made for iOS): two-way communication with an application on the host device. The KDC can send data or receive commands to or from the host device. So, any application is required to use KDC. One example is Koamtac's KTSync, which is developed using Koamtac SDK (Software Development Kit). When connected to KTSync application, the data can be wedged to the keyboard. (KTSync Keyboard)

Select one of the two pairing methods described below.

HID Normal – Requires Keyboard Wedge or HID Keyboard

- a. Scan the HID Normal & Pairing bar code. If done correctly, the LED on the side of your KDC470/475 will begin blinking orange.
- b. HID Normal & Pairing Barcode (Android/macOS/Window)



- c. HID Normal & Pairing Barcode (iOS)



- d. Navigate to the Bluetooth settings on the device and turn Bluetooth on.
- e. Underneath the list of available devices, tap on the KDC470. The serial number will appear in brackets, which you can cross-check with the serial number on the back of the KDC.
- f. The KDC will beep when connected.
- g. Open any application with a text field and tap on the text field and scan any barcode, then it will show up on the text field.

SPP (Application Mode)

- a. First, connect the KDC to the phone in SPP mode. If the KDC is already connected, make sure to unpair it first
- b. Scan the SPP/MFi & Pairing bar code. The LED on the side of your KDC470 will begin blinking red (Android) or green (iOS).
- c. SPP & Pairing Barcode (Android/macOS/Windows)



SPP & Pairing

- d. MFi & Pairing Barcode (iOS) – 1D & 2D



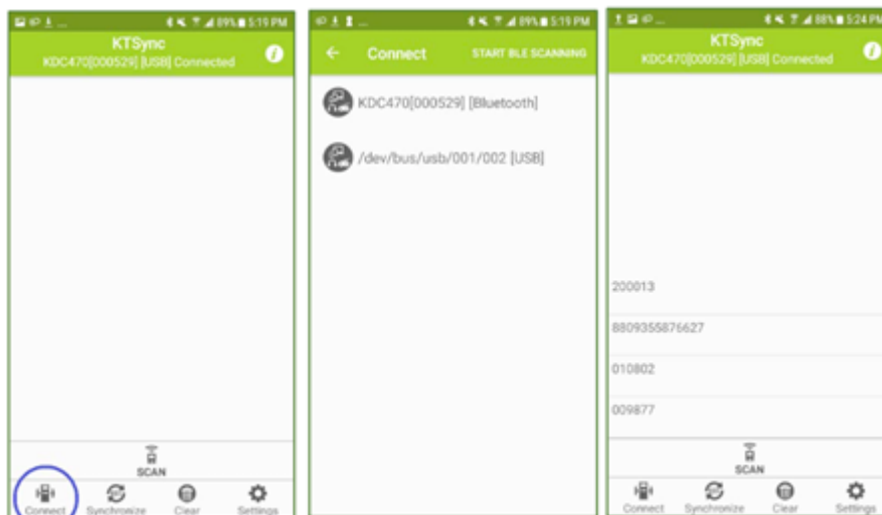
MFi & Pairing

- e. Navigate to the Bluetooth settings on the host device and turn Bluetooth on.
- f. Underneath the list of available devices, tap on the KDC470. The serial number will appear in brackets, which you can cross-check with the serial number on the back of the KDC.
- g. The KDC will pair to the phone but needs to connect to an application to function correctly.
- h. Once the KDC470 is connected to an application, it will beep upon connection.

STEP 4: Usage

You can use KTSync to utilize your KDC alone or with a native application. This is only available using USB OTG (Android), Serial (iOS), or Bluetooth connection with SPP or MFi.

- Download and install KTSync from the Google Play Store or the Apple App Store.
- Open KTSync and tap on the “Connect” option on the bottom left to view a list of available devices. (Fig. 1)
- From the device list, select your KDC – ensuring that the serial number displayed in brackets matches the serial number on the back of your KDC. (Fig. 2)
- Upon successful connection, KTSync will display “Connected” next to the name of your KDC at the top of the application. (Fig. 3)
- To test your connection, scan any barcode. If the connection is successful, the barcode data will display on the screen. (Fig. 3)



< Fig. 1 >

< Fig. 2 >

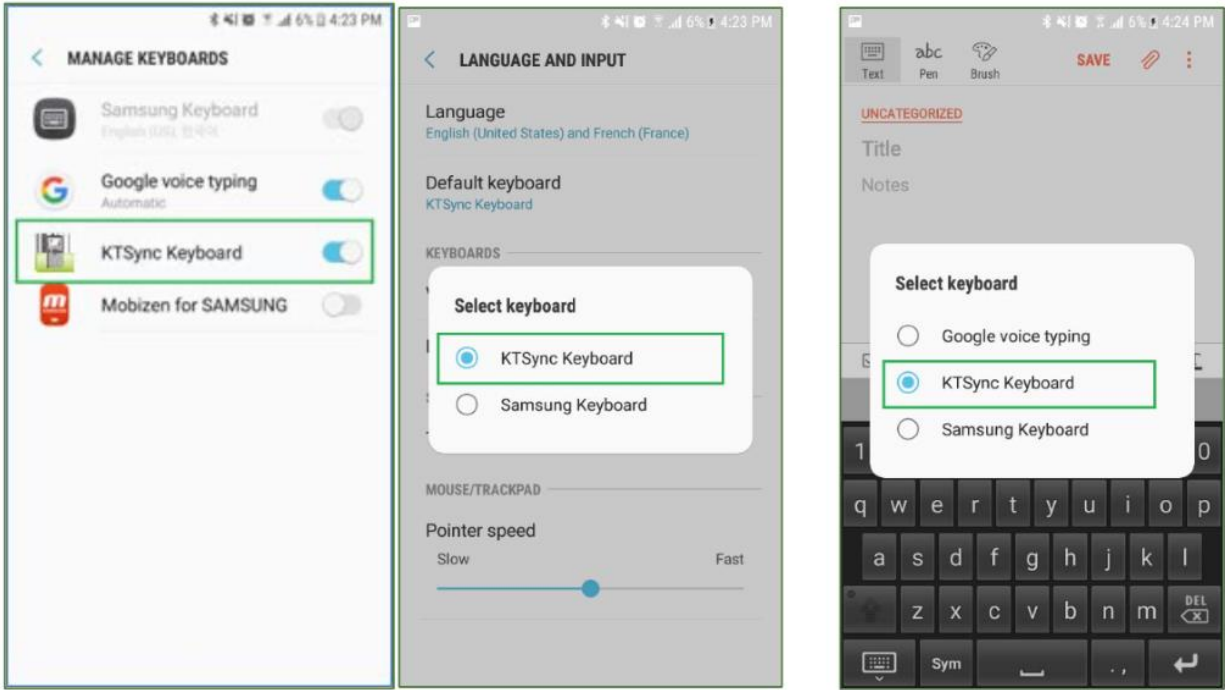
< Fig. 3 >

Using KTSync Keyboard – Android

Once your KDC is connected to KTSync, you can use your KDC as a keyboard.

- While KTSync is running in the background, navigate to Settings, then Language & Input, then Virtual Keyboard, and select Manage keyboards.
- Tap on “KTSync Keyboard” to enable it.

- c. Change “KTSync Keyboard” to the default keyboard. (Fig. 4)
- d. To switch back to the previous keyboard, simply change the default keyboard again. Or, when a text field is selected, swipe down from the top of the screen to bring up the notification panel. Select ‘choose input method,’ and you can select the default keyboard from here. (Fig. 5)



< Fig. 4 >

< Fig. 5 >

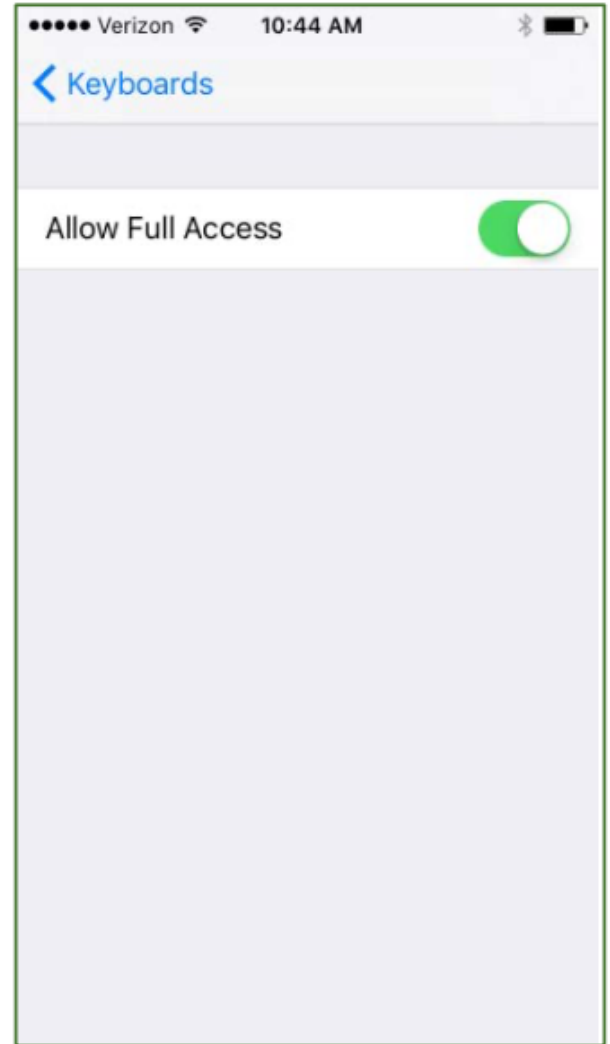
Using KTSync Keyboard – iOS

Once your KDC is connected to KTSync, you can use your KDC as a keyboard.

- a. Navigate to the iPhone/iPad/iPod Settings, then General, then Keyboard, then Keyboards, then Add New Keyboard... and select the KTSync keyboard to be added. (Fig. 6)
- b. Select the KTSync Keyboard and toggle the switch to Allow Full Access. (Fig. 7)

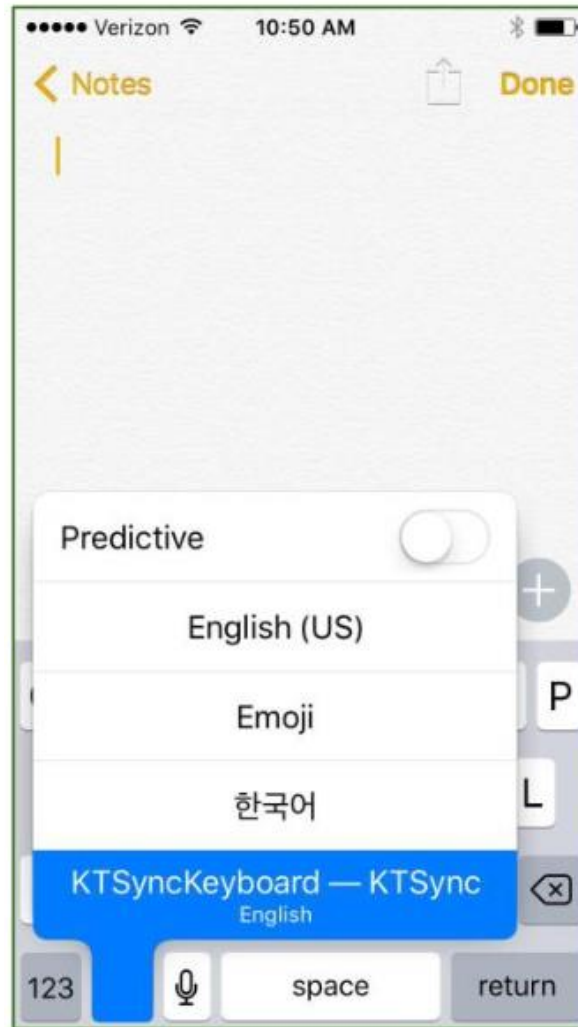


< Fig. 6 >



< Fig. 7 >

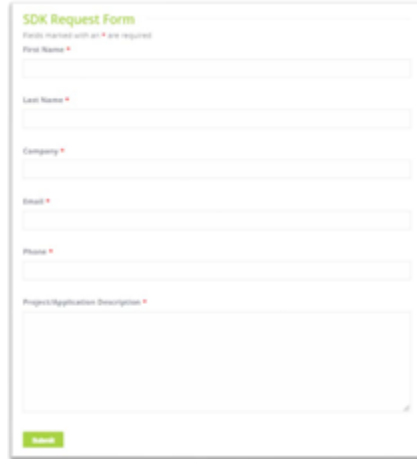
- c. Open the application you want to scan into and tap on the screen, so the on-screen keyboard appears.
- d. Press and hold the globe icon located to the left of the spacebar.
- e. Select the KTSync Keyboard and begin scanning. (Fig. 8)



< Fig. 8 >

A Software Development Kit (SDK) for Android and iOS is available to all KOAMTAC customers to ensure the smooth development of applications that work seamlessly with a KDC scanner. It's easy to request the SDK from the KOAMTAC website:

- a. On any web browser, open www.koamtac.com
- b. Navigate to SUPPORT > Downloads > SDK
- c. Complete and submit the form. (Fig.9)

The image shows a web form titled "SDK Request Form". Below the title, it says "Fields marked with an * are required". The form contains several input fields: "First Name *", "Last Name *", "Company *", "Email *", and "Phone *", each followed by a red asterisk. At the bottom of the form is a larger text area labeled "Project Application Description *" and a green "Submit" button.

< Fig. 9 >

The KOAMTAC setup manual was based on KOAMTAC's User Manual.

For additional barcodes, questions, and features, you can find it [here](#).